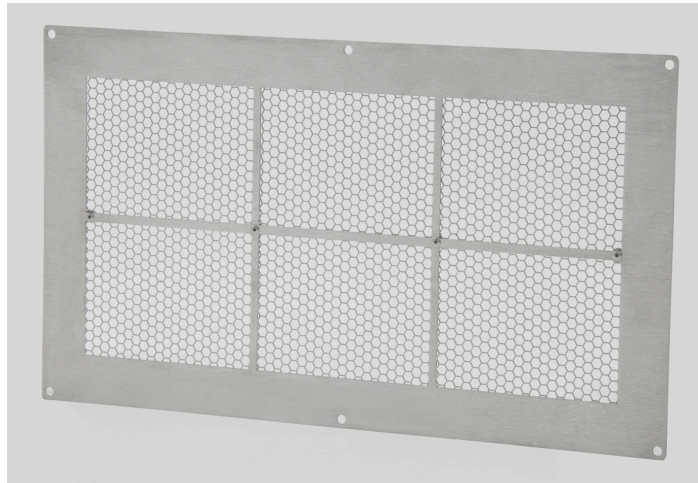


# FLOOD SOLUTIONS, LLC

ICC-ES CERTIFIED - ENGINEERED - FEMA COMPLIANT

Flood Vents

Model "FS-1608-HEX"



## Short Specification

Flood Solutions Model "FS-1608-HEX" Aluminum Flood Vents:

Furnish and install where indicated on drawings Flood Solutions ICC-ES CERTIFIED ENGINEERED FLOOD vents. Model "FS-1608-HEX"; minimum opening required: 16"W x 8"H; each vent covers 110 square feet; as manufactured by Flood Solutions, LLC, Pelham, NH, 1-800-325-9775. Flood Vents to be constructed of aluminum sections, minimum frame thickness is .060"; 5052 alloy. Hexagon openings are constructed of 3003-H14 alloy; .032" thickness; ¼" hexagon holes on 9/32" centers, staggered hole pattern perforated screen. FS-1608-HEX Vents come with a 1-7/16" front overlap flange frame. Vents are mill finish. Vents are suitable for field painting or may be installed in mill finish as provided.

Model	Minimum Opening Required	Net Free Area (Air Flow) (square inches)	ENGINEERED Opening Covers (square feet)
FS-1608-HEX	16"Wide x 8"High	91.35	110



**FLOOD SOLUTIONS, LLC.**

One Industrial Park Drive  
Bldg. 27

Pelham NH, 03076

Toll Free: 1-800-325-9775

In NH: 603-595-5222

Fax: 603-595-4778

[www.floodsolutions.com](http://www.floodsolutions.com)

[info@floodsolutions.com](mailto:info@floodsolutions.com)