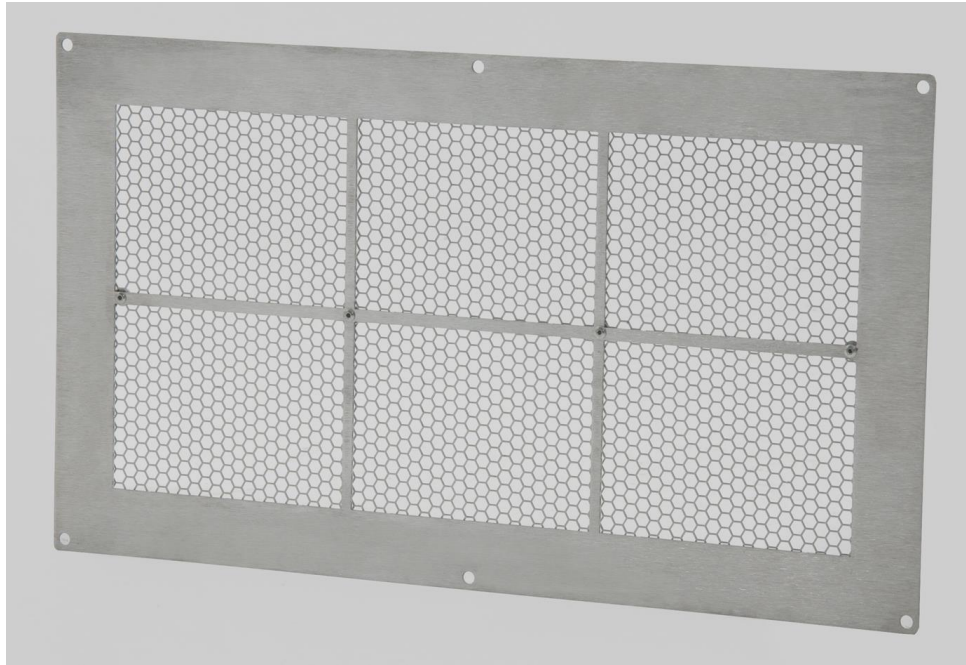


FLOOD SOLUTIONS™ MODEL “FS-HEX”

FEMA COMPLIANT, ICC CERTIFIED ENGINEERED FLOOD VENTS



FEMA Compliant Engineered Flood Vents meet FEMA requirements when installed properly.

- Use at least 2 flood vents per enclosed area below flood grade, installed on at least two separate walls.
- The bottom of the flood vent opening must not be higher than 12 inches above the grade.
- At least 1 square inch of engineered opening for every 1 square foot of enclosed space.
- ICC-ES CERTIFIED VENT

Qty	Model	Minimum Opening Required	Tip to Tip Dimensions	Engineered Opening Covers
	FS-1608-HEX	16" Wide x 8" High	18-1/2"W x 10-1/2"H	110 sq ft

Frame: ALUMINUM; .063" minimum thickness, with 6 square openings in front face, each opening in the vent is 1/4" hexagon

Finish: each vent has a satin sanded finish. This finish may be field painted.



FLOOD SOLUTIONS, LLC.
 One Industrial Park Drive
 Bldg. 27
 Pelham NH, 03076
 Toll Free: 1-800-325-9775
 In NH: 603-595-5222
 Fax: 603-595-4778
www.floodsolutions.com
info@floodsolutions.com

PROJECT	
CONTRACTOR	
DATE	