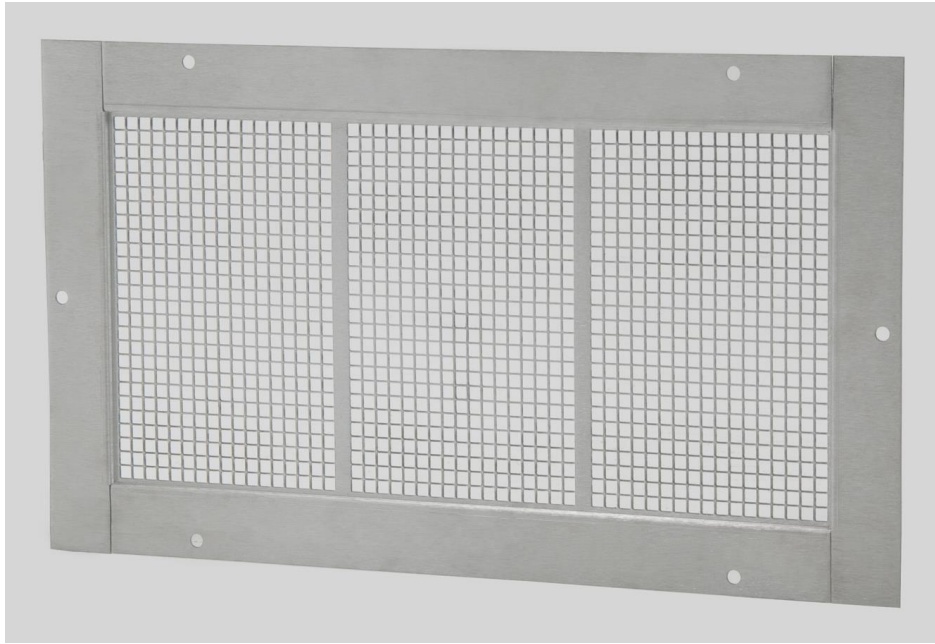


FLOOD SOLUTIONS™ MODEL "FS"

FEMA COMPLIANT, ICC CERTIFIED ENGINEERED FLOOD VENTS



FEMA Compliant Engineered Flood Vents meet FEMA requirements when installed properly.

- Use at least 2 flood vents per enclosed area below flood grade, installed on at least two separate walls.
- The bottom of the flood vent opening must not be higher than 12 inches above the grade.
- At least 1 square inch of engineered opening for every 1 square foot of enclosed space.
- ICC-ES CERTIFIED VENT

Qty	Model	Minimum Opening Required	Tip to Tip Dimensions	Engineered Opening Covers
	FS-1608	16" Wide x 8" High	18-1/2"W x 10-1/2"H	97 sq ft
	FS-1616	16" Wide x 16" High	18-1/2"W x 18-1/2"H	191 sq ft
	FS-1412	14-1/2"W x 12"H	17"W x 14-1/2"H	129 sq ft

Frame: ALUMINUM; .050" minimum thickness, with square openings in front face, each opening is 1/4" x 1/4"

Finish: each vent has a satin sanded finish. This finish may be field painted.



FLOOD SOLUTIONS, LLC.

One Industrial Park Drive
Bldg. 27

Pelham NH, 03076

Toll Free: 1-800-325-9775

In NH: 603-595-5222

Fax: 603-595-4778

www.floodsolutions.com

info@floodsolutions.com

PROJECT	
CONTRACTOR	
DATE	