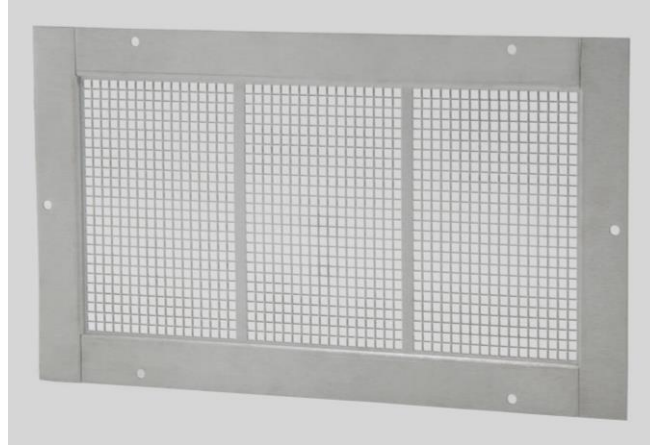


FLOOD SOLUTIONS, LLC

ICC-ES CERTIFIED - ENGINEERED - FEMA COMPLIANT

Model "FS" Flood Vents



Short Specification

Flood Solutions Model "FS" Aluminum Flood Vents:

Furnish and install where indicated on drawings Flood Solutions ICC-ES CERTIFIED ENGINEERED FLOOD vents. Model "FS" (Specify model # *ENTER MODEL NUMBER*; minimum opening required: *ENTER MINIMUM OPENING REQUIRED*; with *ENTER OPENING COVERAGE* square feet;) as manufactured by Flood Solutions, LLC, Pelham, NH, 1-800-325-9775. Flood Vents to be constructed of aluminum sections, minimum frame thickness is .050"; 5052 alloy. FS Vents are min. 1/8" deep with a 1-7/16" front overlap flange frame. Vents are mill finish. Vents are suitable for field painting or may be installed in mill finish as provided.

Model	Minimum Opening Required	Net Free Area (Air Flow) (square inches)	ENGINEERED Opening Covers (square feet)
FS-1608	16" Wide x 8" High	80.68	97
FS-1616	16" Wide x 16" High	158.15	191
FS-1412	14-1/2" W x 12" H (for use w/studs 16" on center)	106.7	129



FLOOD SOLUTIONS, LLC.

One Industrial Park Drive

Bldg. 27

Pelham NH, 03076

Toll Free: 1-800-325-9775

In NH: 603-595-5222

Fax: 603-595-4778

www.floodsolutions.com

info@floodsolutions.com